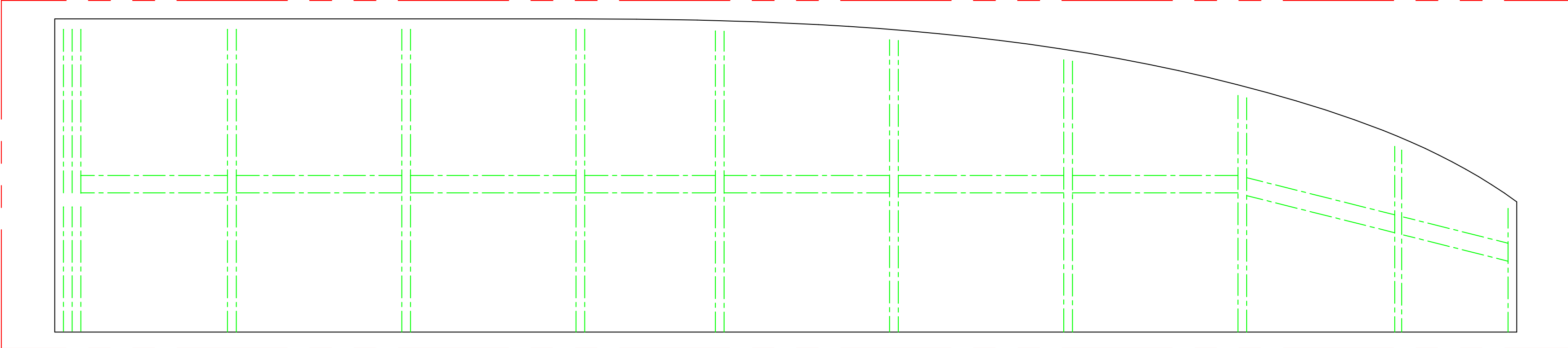
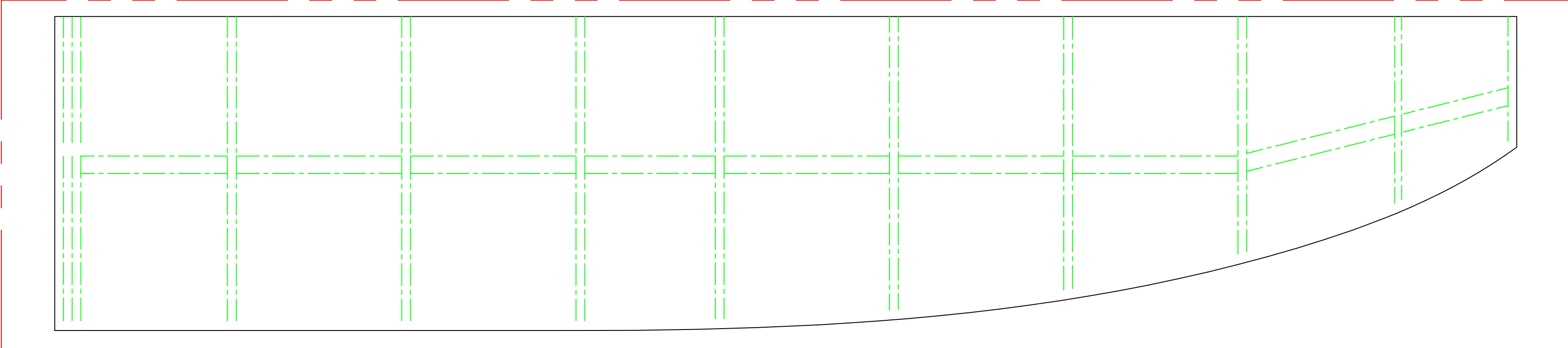
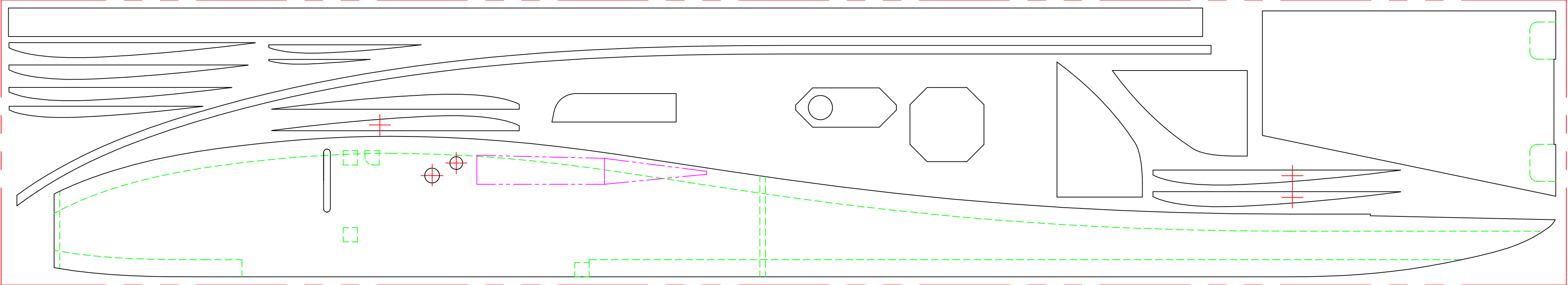
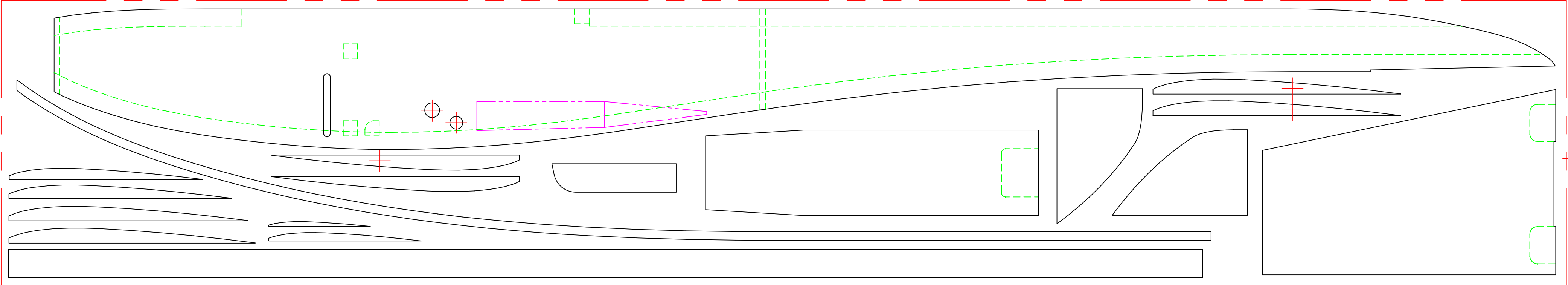
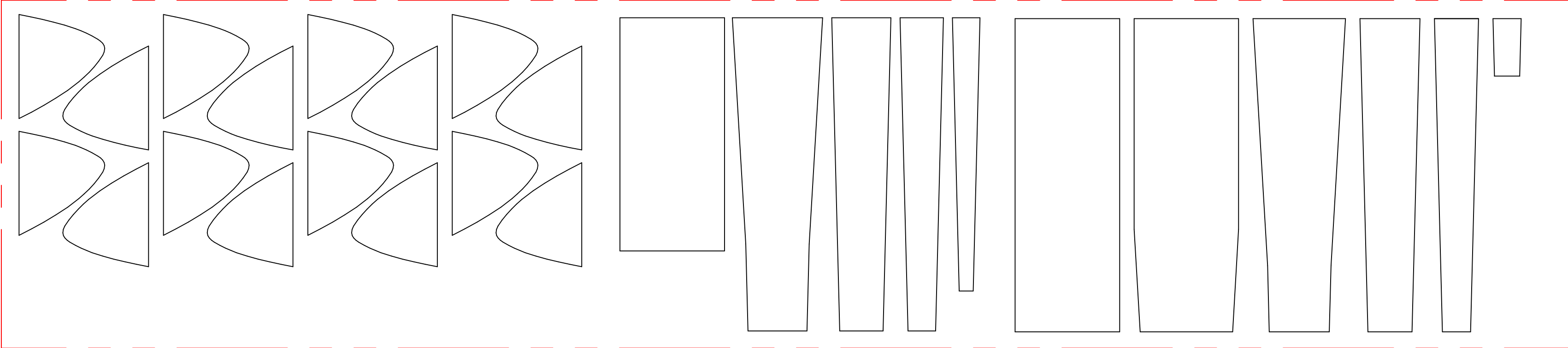


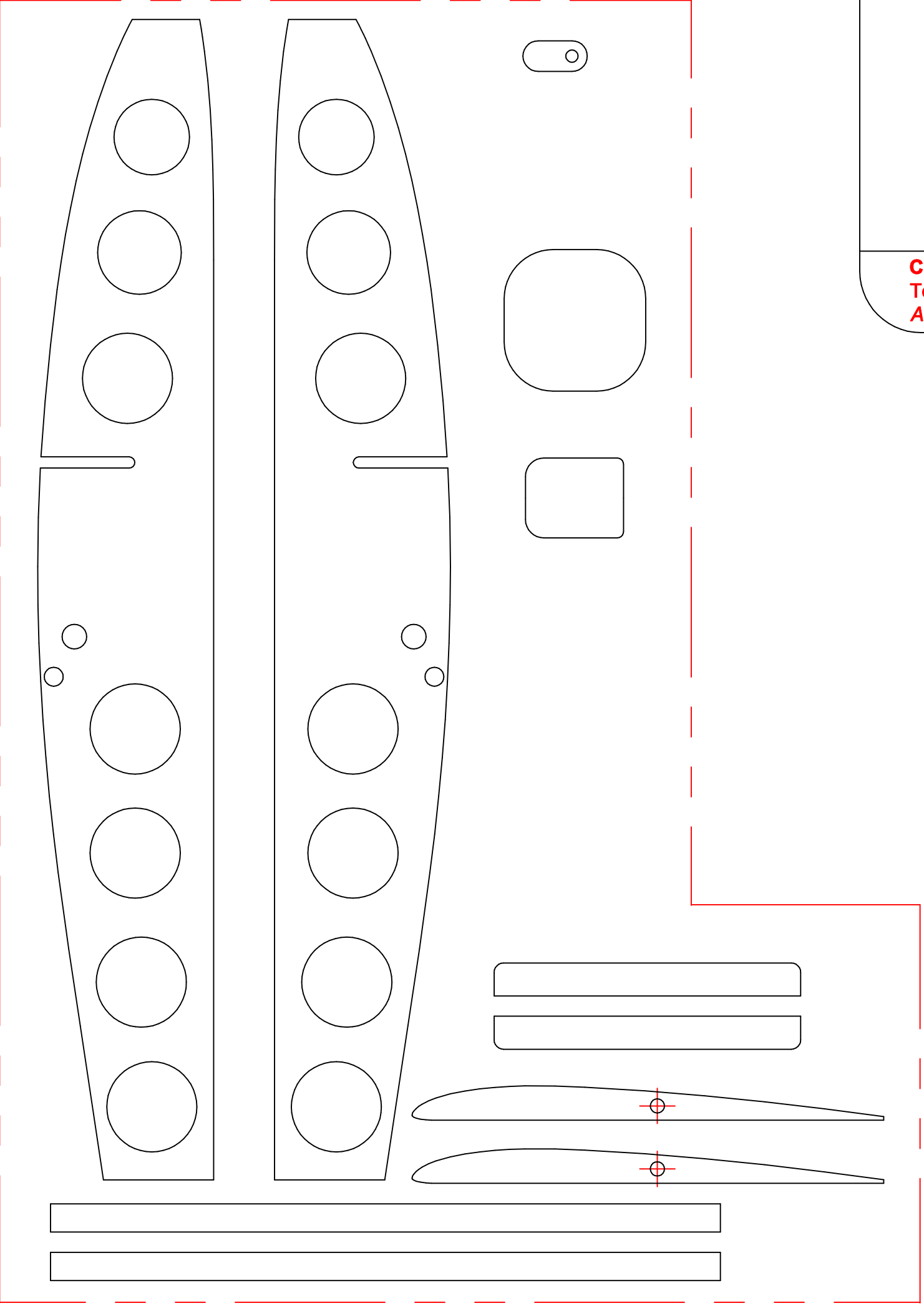
Balsa 1mm



Balsa 2mm



CTP 0.4mm

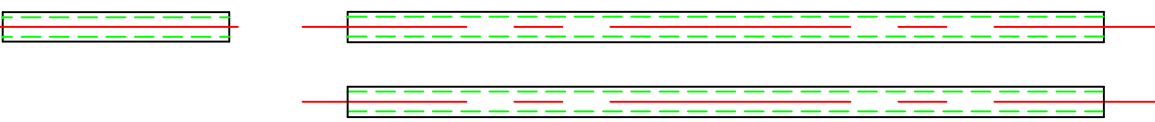


Caracara

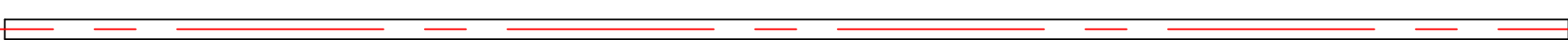
Version du 30.08.2008

Copyright F. Aguerre, tous droits réservés / all rights reserved
Toute diffusion ou utilisation commerciale sans l'avis de l'auteur strictement interdite.
Any distribution or commercial use without the author's opinion strictly prohibited.

Tube plastique $\varnothing 3 \times \varnothing 3,5$ ou $\varnothing 4$



CAP ou carbone $\varnothing 3$



Tube plastique $\varnothing 1 \times \varnothing 2$



CAP $\varnothing 1$

